

# TECHNICAL DATA

THIS DOCUMENT IS NOT CONTRACTUAL

37/GL

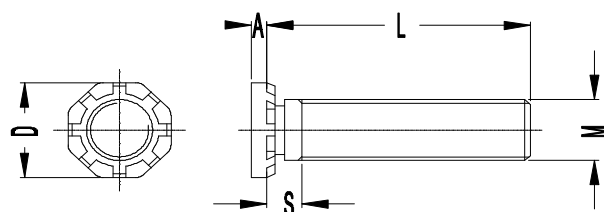
## STUD GL TYPE

6 rue Nationale 92100 BOULOGNE-BILLANCOURT Tél : 01 46 21 05 32 Fax : 01 46 21 00 76

**Description :** Self-clinching threaded stud, high resistance. Easy and rapid mounting with a press on metal sheets, minimum thickness 1.3 mm.

**Advantages :** High torque and pull-out resistance. Ideal replacement for a weld nut.

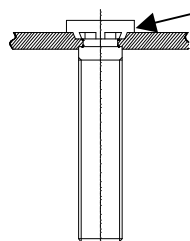
Ref.	Drilling $\varnothing$ +0,1	Minimum thickness	Distance from axis to sheet edge
<b>GL5</b>	5	1,3	10,8
<b>GL6</b>	6	1,5	11,5
<b>GL8</b>	8	2	12,8
<b>GL10</b>	10	2,3	13,8



REF.	Metric thread	D +/-0,3	A	L +/- 0,4						
				15	20	25	30	35	40	50
<b>GL5</b>	M5 x 0,8	7,8	1,15	15	20	25	30	35	40	50
<b>GL6</b>	M6 x 1	9,4	1,30	15	20	25	30	35	40	50
<b>GL8</b>	M8 x 1,25	12,5	1,80	15	20	25	30	35	40	50
<b>GL10</b>	M10 x 1,5	15,7	2,30	15	20	25	30	35	40	50

### Mounting :

See information about self-clinching studs G type.



A

### Caution

Part A uses to top the sheet.

**Material and protection :** Case-hardened steel, zinc-plated white : A  
Stainless steel 303F00, passivated : X

**Designation :** For a stud, you have to indicate :  
1 - la reference  
2 - la material  
3 - la length  
Example : GL6-A-15 : M6 stud large head steel, length 15

**\* Attention :** SIMAF does not stock all these references, please contact your representative.